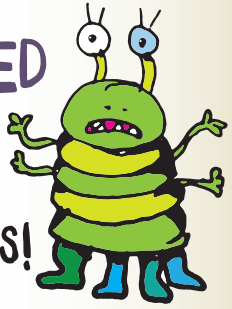


# ARE YOU BOTHERED BY PESTS?

## SO ARE OUR WATERWAYS!



Pesticides, herbicides and fungicides are commonly used to control insects, weeds and diseases. Any chemical used outside has the potential to pollute our waterways through stormwater run-off, water that flows off of the yard when it rains or when the yard is over-watered. This water flows down the driveway, alley and/or street to a storm drain which goes directly to our creeks & lakes carrying the chemicals used in yards.



Such chemicals are toxic and when overused or carelessly applied, they can cause problems for our aquatic habitat. They can also kill beneficial insects, earthworms, birds and other organisms, disrupting the ecological balance of your lawn & garden.

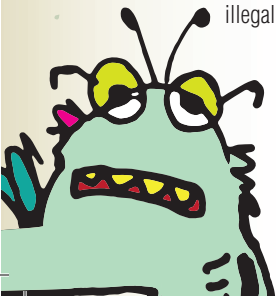
In order to protect our water, please follow this guideline for maintaining your yard:

- Learn to recognize beneficial insects such as lady bugs, praying mantis, dragonfly, spiders, and bees as they are great to have in your yard.
- Research natural ways to prevent and solve specific pest problems.
- Make earth friendly choices when determining what insecticide to use. Choose one that won't harm other insect-eating beneficials.
- When using a chemical, treat only the problem area. Avoid applying a broad-spectrum pesticide.
- Plant a wide variety of native plants to provide a year round habitat to attract beneficials to your garden.



Finally, once you have discovered the many natural ways to control your pest problem you might find that you have no need for the chemical pesticides. Please dispose your chemicals responsibly and free of charge at the Dallas County Home Chemical Collection Center, 11234 Plano Road.

Visit [www.garlandstormwater.org](http://www.garlandstormwater.org) for more information or call the Stormwater hotline, 972-205-2180, to report any illegal discharge to the storm drains.



**GARLAND**

**STORMWATER MANAGEMENT**