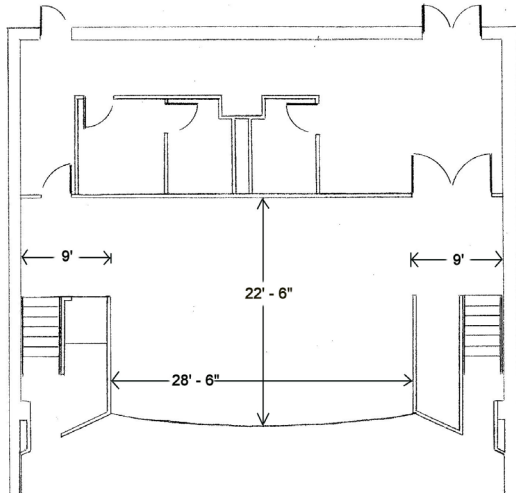


# Granville Arts Center

# Plaza Theatre

# Technical Specs – Quick Sheet



350 Permanent Seats. 6 Wheelchair Spaces / Removable Seats.

<b>Proscenium:</b>	Width: 28'-6"	Height: 13'-11"	Depth (main drape to back wall): 22'-6"	Depth (main drape to cyclorama): 21'-6"
<b>Apron:</b>	Depth: Varies (DS edge to main drape)	2' at SL & SR	3' at CS	
<b>Wing Space:</b>	SL: 9'	SR: 9'		
<b>Crossover:</b>	Outside corridor in hallway			
<b>Stage Height:</b>	Audience floor to stage floor 2'-2 <sup>3</sup> / <sub>4</sub> "			
<b>Floor:</b>	Stage floor is 2 <sup>1</sup> / <sub>4</sub> " continuous strip tongue and groove natural oak with light finish on 2 layers of 1 <sup>1</sup> / <sub>2</sub> " sheathing with EPDM rubber pads on 1 <sup>1</sup> / <sub>8</sub> " tongue and groove plywood subfloor supported by 16" sleepers.			
<b>ADA Access:</b>	Hydraulic Chair Lift from audience level to stage level			

### Loading Dock:

Ground level access from outside, uncovered, into backstage area with no elevated dock and no height restriction for trucks. Doors are 5' W x 9'-8 1/2" H (with center pole removed) from outside to backstage and 7'-5" W x up to 12' H from backstage to onstage.

### Dressing/Waiting:

1- dressing room, 7'-6" x 9', equipped with mirrors, lights, electrical plugs and a 6' x 7' restroom.  
1- make-up area equipped with mirrors, lights, electrical plugs.  
1- 6' x 7' restroom.  
Backstage storage is limited

### Audio:

Sound booth is in right rear of house.

**Console:** Behringer X32  
40 Input, 25 Bus digital mixing console  
32 programmable MIDAS Preamps  
25 motorized faders, channel LCD's  
USB Audio interface

**House:** 2- EAW MK2164 8ohm mains

**Monitors:** 4- ARM 12" portable wedges  
2- Yamaha 10" SM10V  
2- JBL EON 615's  
2- JBL EON 612's

**Playback:** Denon DN-C615 CD Player

**Comm:** 6 - EarTec Wireless Headsets

**Wireless:** 7- Shure wireless microphones with handheld or lapel options

### Microphones:

- 8- Shure SM58 wired
- 3- Shure SM 57 wired
- 4- Shure MX202B/C Overhead
- 2- Crown PCC 160 floor microphones
- 1-SHUREPGA52 Kick Drum Microphone
- 2-CROWN CM700 Condenser Mics

### Rental Equipment:

These items are available for an additional rental charge:

- Upright Piano
- Followspot
- Wireless Microphones

### Technical Coordinator:

**Markeef Fluellen**

972-205-3656

[mfluellen@garlandtx.gov](mailto:mfluellen@garlandtx.gov)

11/2020

### Electrical:

Light Booth is in right rear of house.

Main feed: 1000A; 3-phase

**Control:** ETC Element  
96 Control Channel  
Dimmer per circuit –130 -2.4kw circuits  
Electronic soft patch

**Connectors:** L5 – 20p twist lock

**Followspots:** 1 – MegaLite Drama FS LED 700

**Luminaries:** 15- ETC Dimmer Doublers  
20- ETC Source 4 575 W (26°)  
10- ETC Source 4 575 W (36°)  
19- ETC Source 4 Parnels  
3 – ETC ColorSource CYC  
8 – ETC ColorSource Pars  
2 – ADJ VIZI CMY 300  
1 – Elation Platinum Spot III  
2 – TomShine Mini Movers

### Rigging:

All hanging positions are fixed. There are no adjustable battens.

**Grid Height:** 14', fixed

**Main Curtain:** 14' Waterfall, motorized

**Main Curtain Height:** 11'-6" (stage floor to bottom of curtain when raised.)

**Instrument Height:** 12' (stage floor to bottom of lowest instrument)

**Center Stage Black:** 2- 20'W x 14'-10"H panels  
Manual track operation

**Up Stage Black:** 2- 28'W x 14'-10"H panels  
Manual track operation

